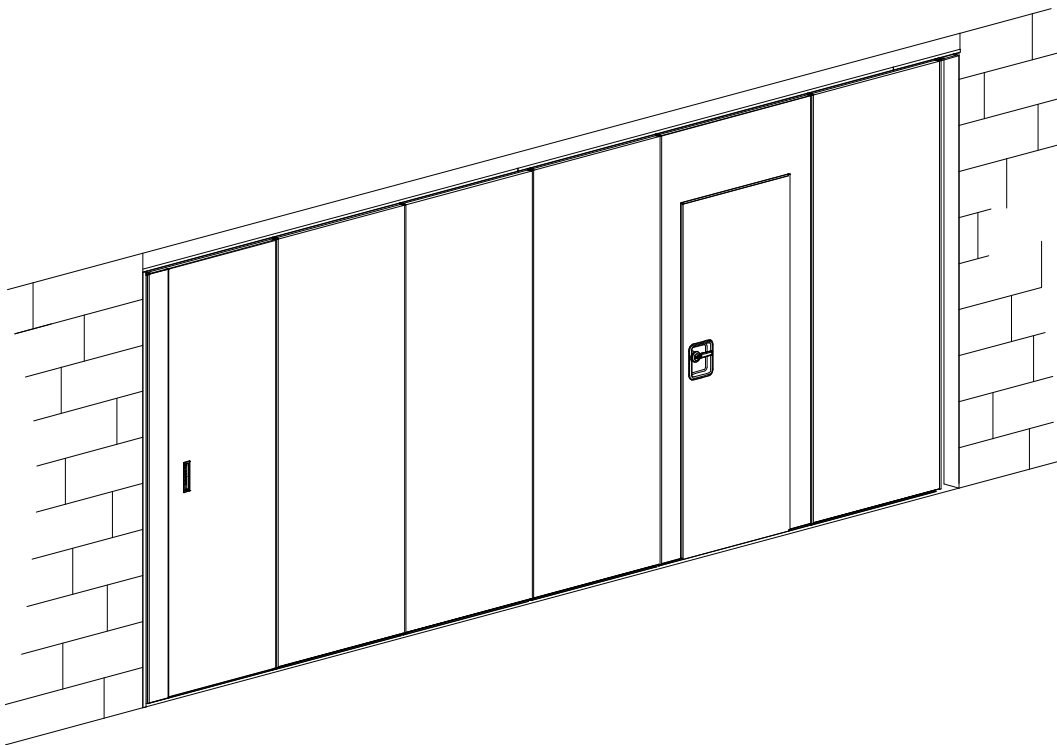


A word cloud featuring the Dutch phrase "MOBIELE WANDEN" (Mobile Walls). The words are arranged in a dense, overlapping pattern, with some words appearing horizontally and others vertically. The font is a bold, sans-serif typeface, and the words are in black, creating a high-contrast, abstract visual effect.



THIS INSTALLATION MANUAL FORMS PART OF THE USER GUIDE. KEEP THESE DOCUMENTS TOGETHER IN A SAFE PLACE FOR FUTURE REFERENCE!

If you have any queries concerning the duration and terms of the guarantee, please contact your supplier. We would also refer you to our General Sale and Supply Conditions, which are available on request.

The manufacturer accepts no liability for any loss or injury resulting from failure to follow this installation manual closely or failure to apply due care and attention when transporting, installing and using the mobile wall panels.

In light of our policy of continuous improvement, it is possible that details of the product may differ from those described in this manual. For this reason, these instructions should only be treated as guidelines for the installation of the relevant product.

This manual has been compiled with all due care, but the manufacturer cannot be held responsible for any errors or the consequences thereof.

All rights are reserved and no part of this manual may be reproduced in any way.

Contents

1.	Introduction	4
2.	Warnings & safety precautions	4
3.	Overview of components	5
4.	Preparing for installation	6
4.1	Checking tools and accessories.....	6
4.2	Checking the assembly area.....	6
4.3	Transport and handling of panels.....	6
5.	Track assembly.....	7
5.1	Points for fixing track to overhead structure - 1-point	7
5.2	Direct fitting of 1-point track	8
5.3	Assembly of 1-point track with studs & track plates.....	9
5.4	Points for fixing track to overhead structure - 2-point	10
5.5	Direct fitting of 2-point track	11
5.7	Track adjustment in direct track fitting	13
6.	Hanging the panels.....	14
6.1	Hanging panels in 1-point track.....	14
6.2	Hanging panels in 2-point track.....	14
7.	Installing telescopic wall connections.....	15
8.	Installing basic wall connections.....	16
9.	Installing magnetic profile.....	18
9.1	Installing magnetic profile.....	18
10.	Adjusting panels.....	19
10.1	Adjusting the height.....	19
10.2	Adjusting the width.....	20
10.3	Adjusting the telescopic sleeve.....	21
11.	Panels with built-in pass door.....	22
11.1	Built-in pass door.....	22
11.2	Panels with built-in double pass door.....	22
12.	Communication panels.....	23
12.1	Assembling the wall connection for communication panels.....	23
12.2	Final assembly of communication panels.....	25
	Appendices.....	26
A.	Electrical connection through track.....	26
B.	Electrical connection in wall jamb.....	27
C.	Parking lock [available on request]	
D.	Central arrangement installation manual [available on request]	
E.	Uninterruptible power supply user manual [available on request]	

1. Introduction

This manual tells you how to assemble and install Espero manually operated mobile walls (Sonico) and semi-automatic mobile walls (mentioned as SA).

This manual relates to product types Sonico 85,100,110 and 120.

The mobile walls can be installed with 1-point or 2-point suspension and consist of a track, wall connection profiles, basic panels and a telescopic panel. The wall may also incorporate door panels or a communicating panel to act as a connecting door.

Please read this manual carefully prior to installation and usage to ensure you are fully aware not only of how to install the walls, but also of how they work and their various features.

2. Warnings & safety precautions

When installing the mobile walls, please observe carefully the instructions and guidelines contained in this manual. Always perform each step in sequence. If any of the instructions are not clear, please contact Espero.

ESPERO BV
Sluisweg 26-28
5145 PE Waalwijk
Tel: 0416 -338955
Fax: 0416 – 332635
E-mail: info@espero.nl

Subject to technical change without notice.

All measurements are in millimetres unless otherwise indicated.

Please keep this manual in a safe place.

The mobile walls should normally be assembled by qualified technical personnel (at least 2 skilled people).

We strongly advise against the use of additional components or leaving out components as this may affect operation and therefore the safe use of the wall panels.

Where the instructions refer to right-hand/left-hand installation, this is always seen from the location at which installation is taking place, i.e. looking from inside to outside.

Cordon off the assembly area with safety tape to keep third parties at a safe distance.

Make sure you have sufficient light.

The semi-automatic wall is not suitable for environments where there is a risk of gas explosion.

Ensure that any circuits on which work is being carried out are completely de-energised before the electrical connections are made.

A mains connection is provided for the electrical power supply. There must be a wall socket within 1.5 metres of the wall strip (230V AC).

In the set-up position, the wall consumes approx. 1W per panel if the power supply is not switched off.

Take care to avoid getting fingers or hands trapped when fitting the panels: move the panels carefully.

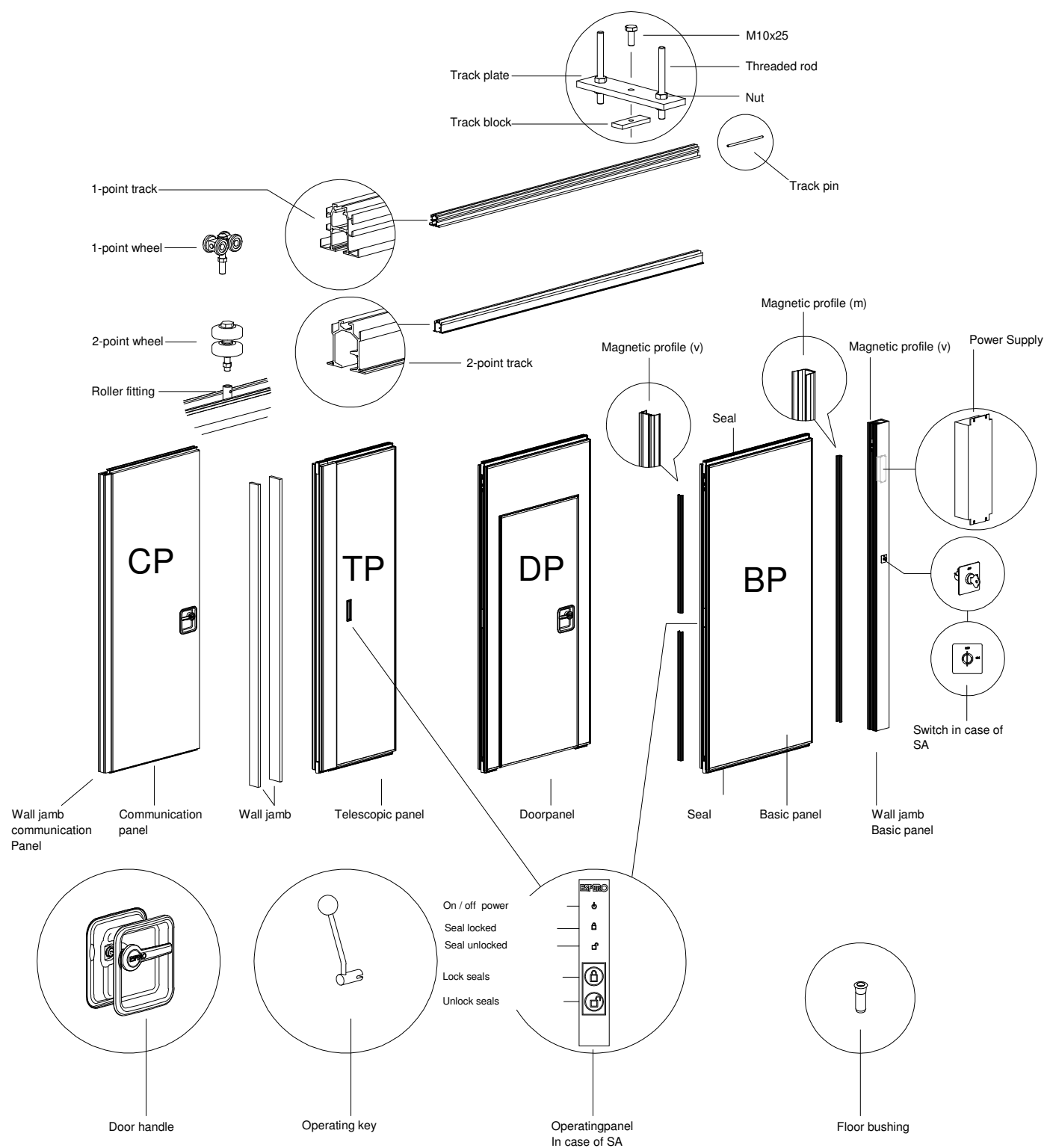
When operating (locking) the locking strips ensure that no one could get their fingers, hands or feet trapped by the locking strip.

Note: Do NOT allow the panels to bang into one another. This will cause expensive damage to the profiles.

Note: Use the positions indicated in the supplied drawing to determine the positions of the individual panels.

The manufacturer accepts no liability whatsoever for loss or injury caused by failure to comply fully with the safety precautions and instructions contained in this manual or by carelessness during the installation of the product and any accessories described in this document.

3. Overview of components



4. Preparing for installation

4.1 Checking tools and accessories

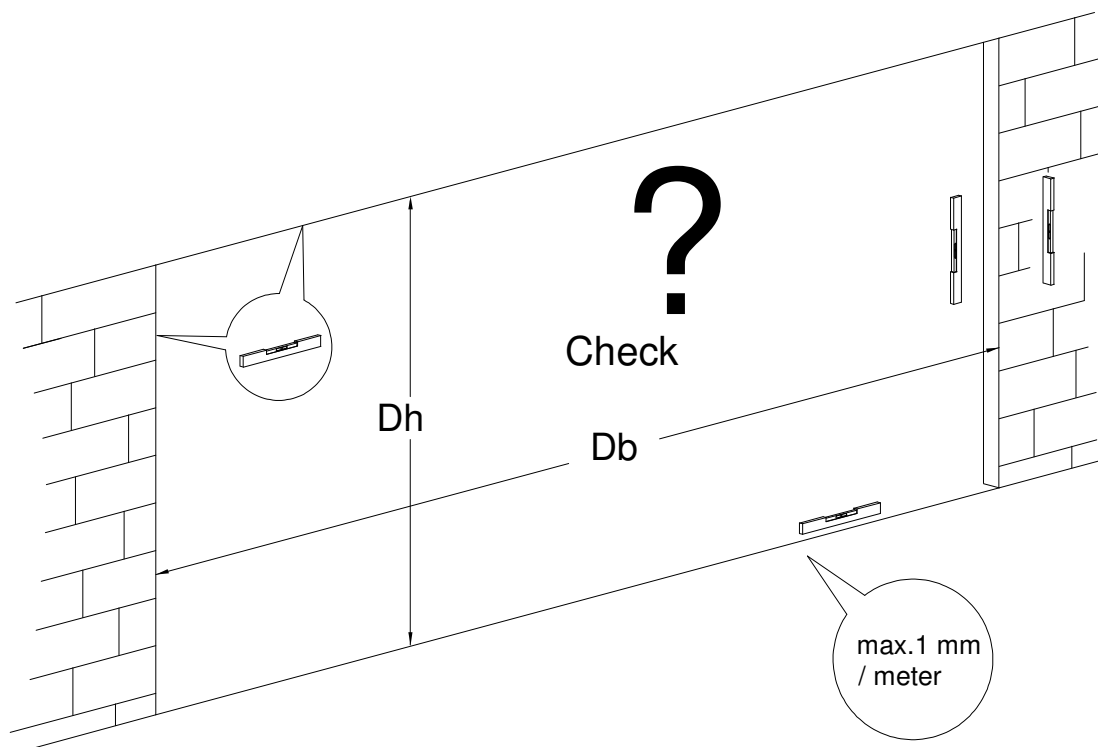
You will need the following tools/equipment:

- Hoisting device, scissor lift, stable & secure ladder, steps
- Tape measure, chalk line
- Spirit level
- Flexible screwdriver, screwdriver, cordless screwdriver
- Spanner, socket rings, socket spanner
- Hammer drill, power drill, cordless drill
- Hacksaw, saw bench, jigsaw
- Laser line generator
- Mastic gun, installation adhesive, sealant

4.2 Checking the assembly area

Db = clear width

Dh = clear height

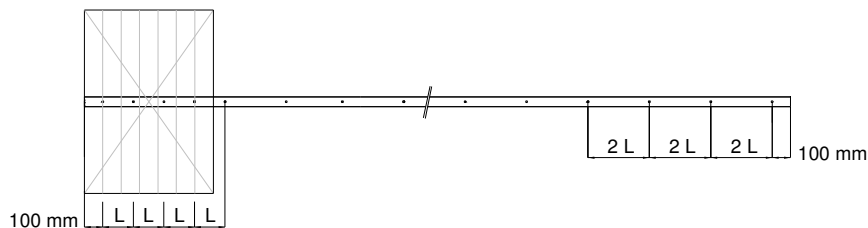


4.3 Transport and handling of panels

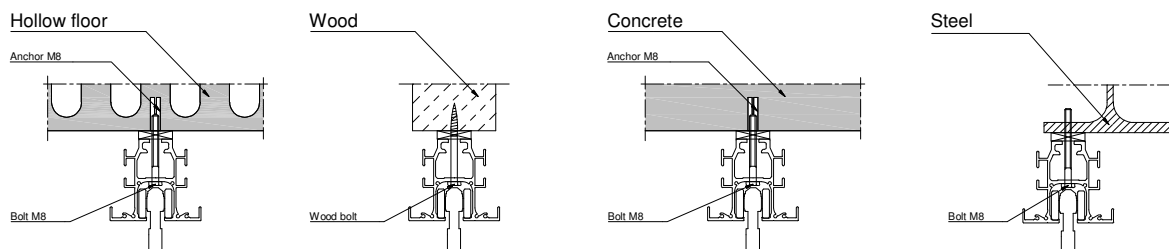
The panels must be moved and set up by at least 2 people. Move the individual panels using a trolley or similar. During transport, the panel should ideally be supported on one of the long sides. From this position, move the panel around its lengthwise axis to stand it upright.

5. Track assembly

5.1 Points for fixing track to overhead structure - 1-point



Direct fitting:



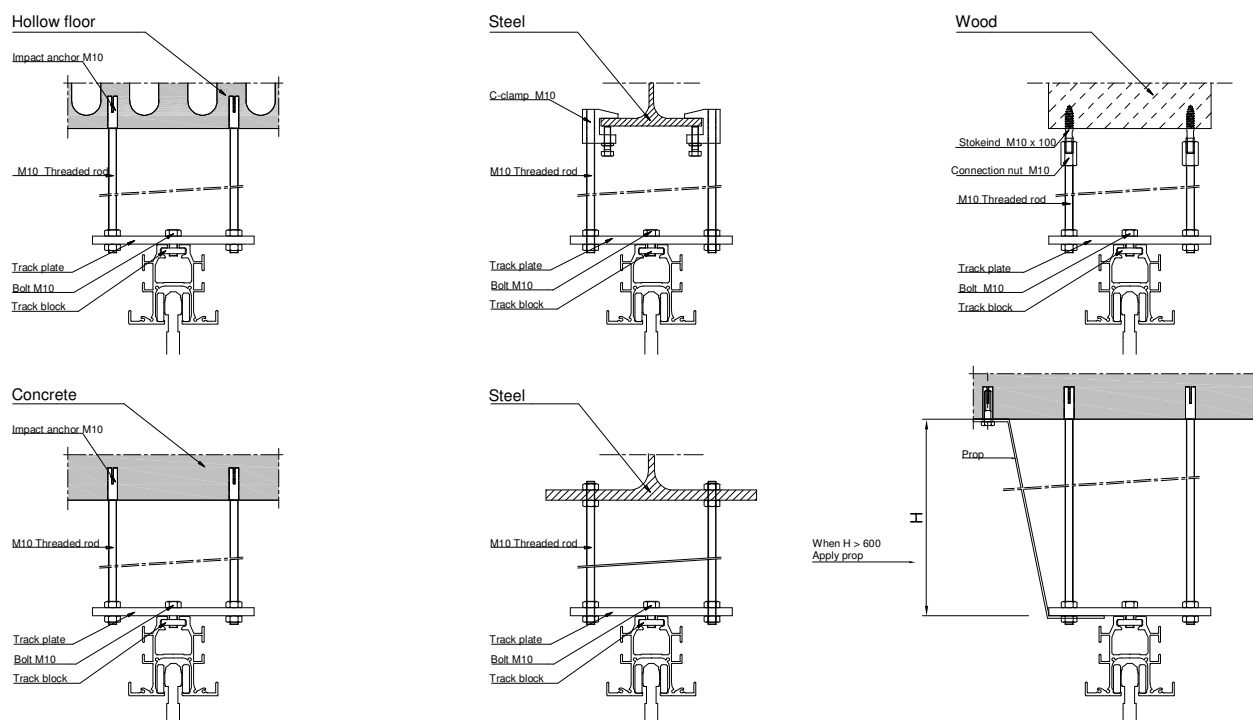
Max. fitting distance L when fitted directly

pan.weight	M8x30 in Hollow floor	M8x40 in Hollow floor	concrete / woodbolt	Steel
	2200 N	3300 N	3300 N	5000 N
75 kg	200 mm	400 mm	400 mm	600 mm
100 kg	200 mm	300 mm	300 mm	500 mm
150 kg	100 mm	200 mm	200 mm	300 mm
200 kg	100 mm	100 mm	100 mm	200 mm
250 kg	0 mm	100 mm	100 mm	200 mm

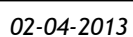
Max. fitting distance L when suspended construction

pan.weight	M10x30 in Hollow floor	C-clamp M10	M10x40 in Hollow floor	M10x30 concrete / rod-end M10	M10x40 in concrete
	4400 N	5000 N	6600 N	6600 N	10200 N
75 kg	500 mm	600 mm	800 mm	800 mm	1000 mm
100 kg	400 mm	500 mm	600 mm	600 mm	1000 mm
150 kg	200 mm	300 mm	400 mm	400 mm	600 mm
200 kg	200 mm	200 mm	300 mm	300 mm	500 mm
250 kg	100 mm	200 mm	200 mm	200 mm	400 mm

Suspended construction with studs:

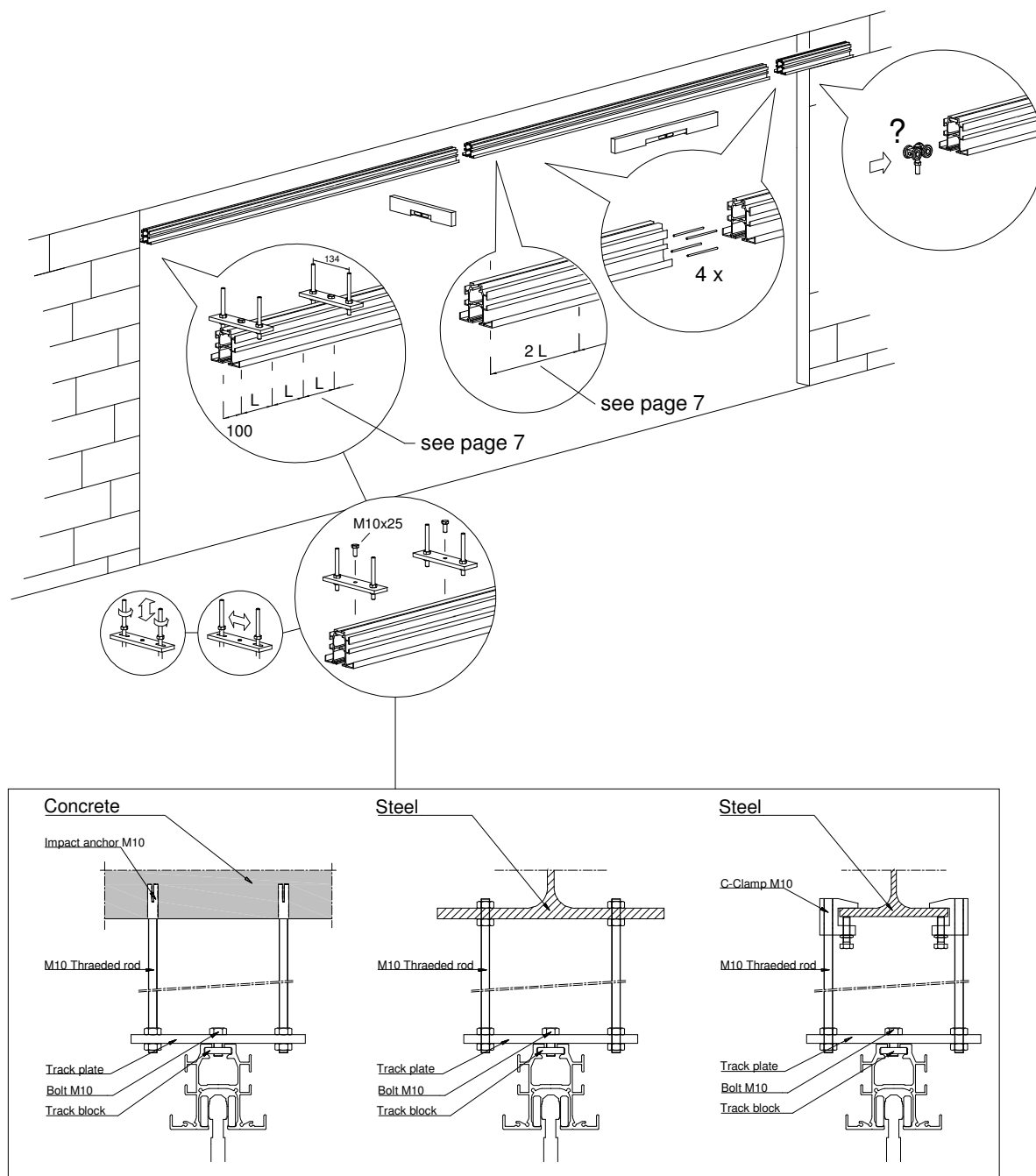


N.B.: If ceiling is fixed, place wheels in track in advance.

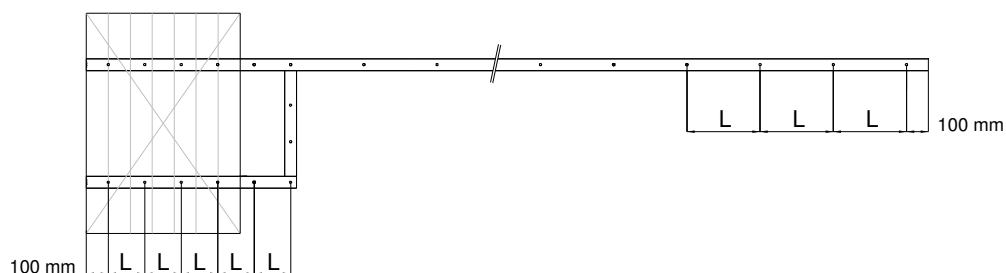


5.3 Assembly of 1-point track with studs & track plates

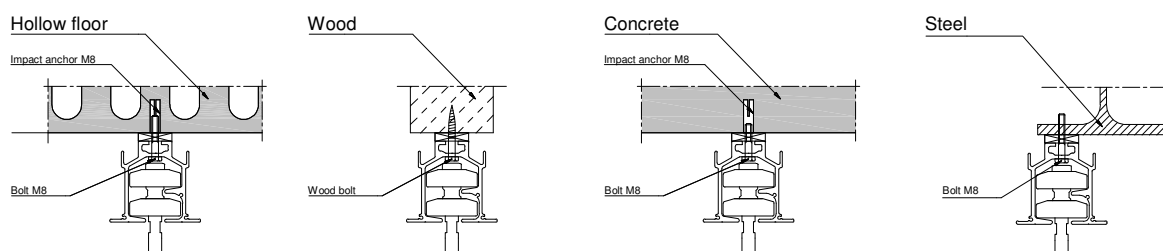
N.B.: After track installation, finish the sound baffle (if required).



5.4 Points for fixing track to overhead structure - 2-point



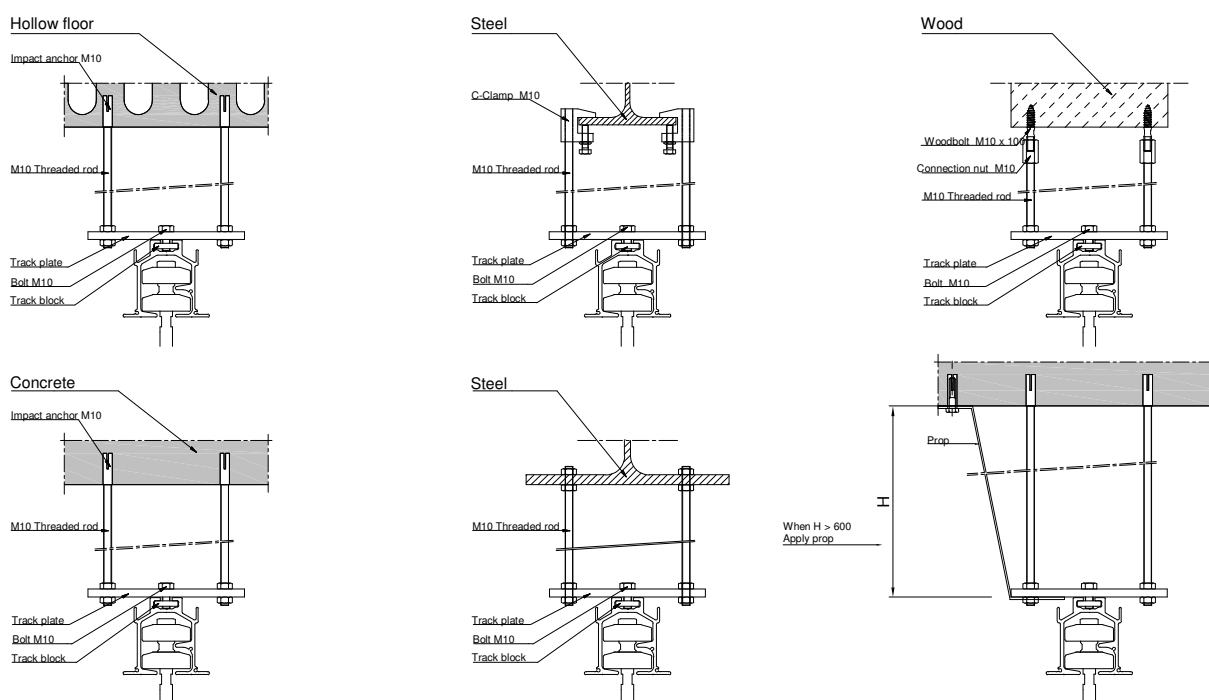
Direct assembly:



Max. fitting distance L when direct assembly				
pan.wieght.	M8x30 in Hollow floor	M8x40 in Hollow floor	Concrete / woodbolt	Steel
	2200 N	3300 N	3300 N	5000 N
100 kg	400 mm	600 mm	600 mm	600 mm
150 kg	200 mm	400 mm	400 mm	600 mm
200 kg	200 mm	300 mm	300 mm	500 mm
250 kg	-	200 mm	200 mm	400 mm
300 kg	-	200 mm	200 mm	300 mm
350 kg	-	-	-	200 mm
400 kg	-	-	-	200 mm

Max. fitting distance L when Suspended constructions					
pan.wieght.	M10x30 in Hollow floor	C-clamp M10	M10x40 in Hollow floor	M10x30 Beton woodbolt M10	M10x40 in concrete
	4400 N	5000	6600 N	6600 N	10200 N
100 kg	600 mm	600 mm	600 mm	600 mm	600 mm
150 kg	500 mm	600 mm	600 mm	600 mm	600 mm
200 kg	400 mm	500 mm	600 mm	600 mm	600 mm
250 kg	300 mm	400 mm	500 mm	500 mm	600 mm
300 kg	200 mm	300 mm	400 mm	400 mm	600 mm
350 kg	200 mm	200 mm	300 mm	300 mm	500 mm
400 kg	200 mm	200 mm	300 mm	300 mm	500 mm

Suspended construction with studs:

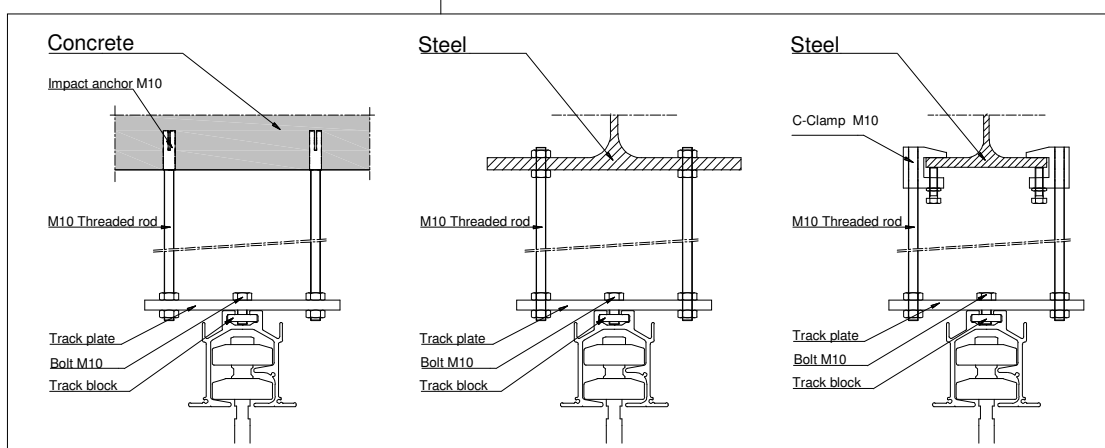
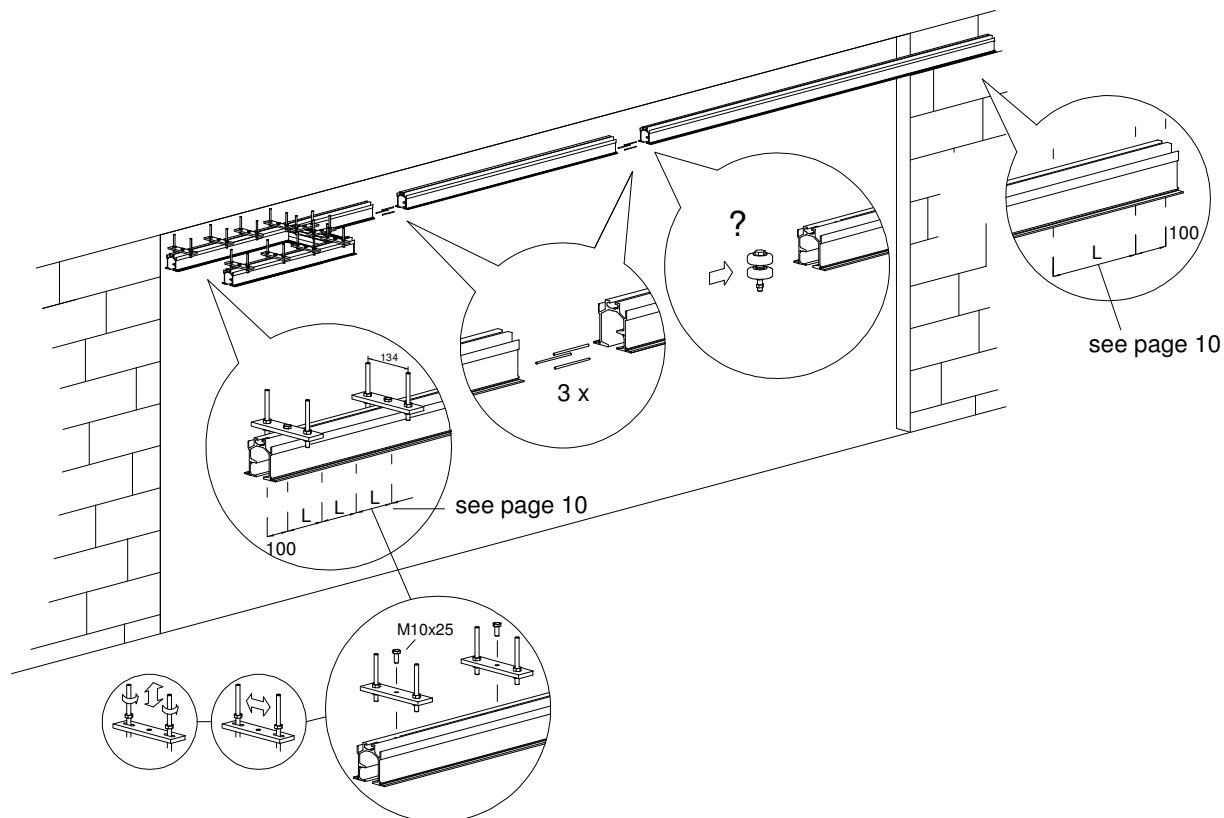


N.B.: If ceiling is fixed, place wheels in track in advance.

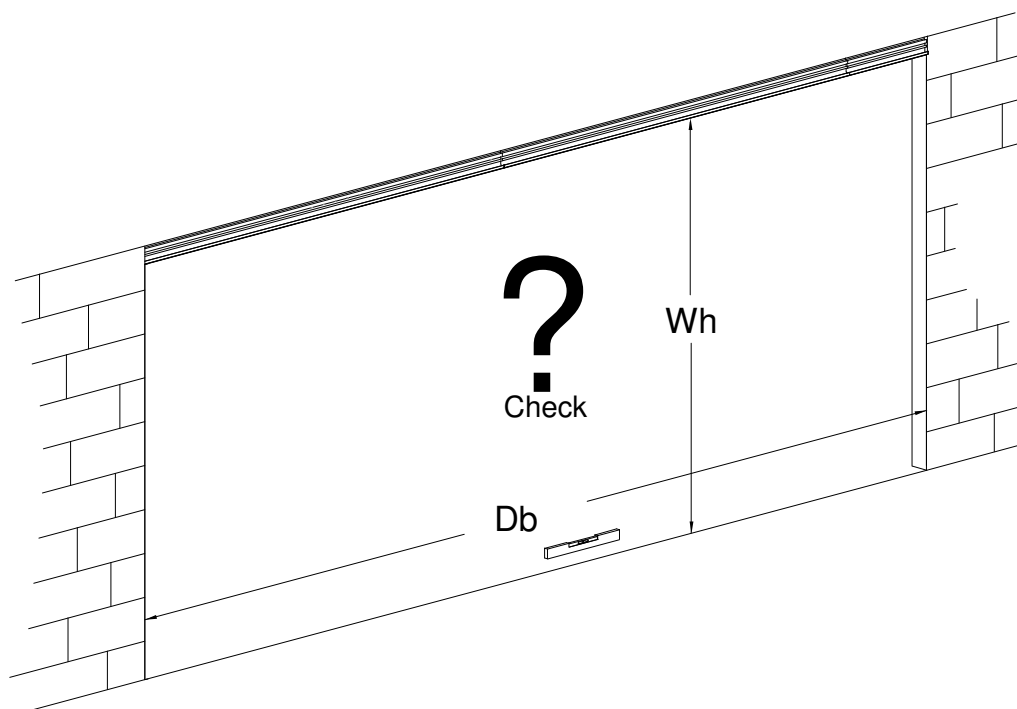
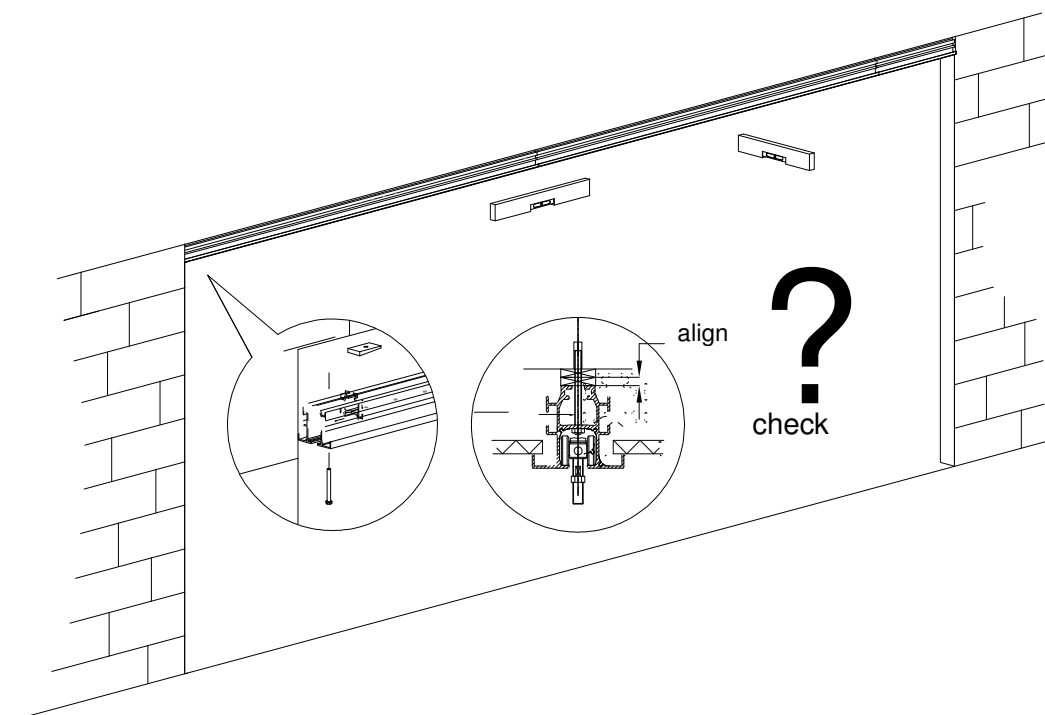


5.6 Assembly of 2-point track with studs & track plates

N.B.: After track installation, finish the sound baffle (if required).



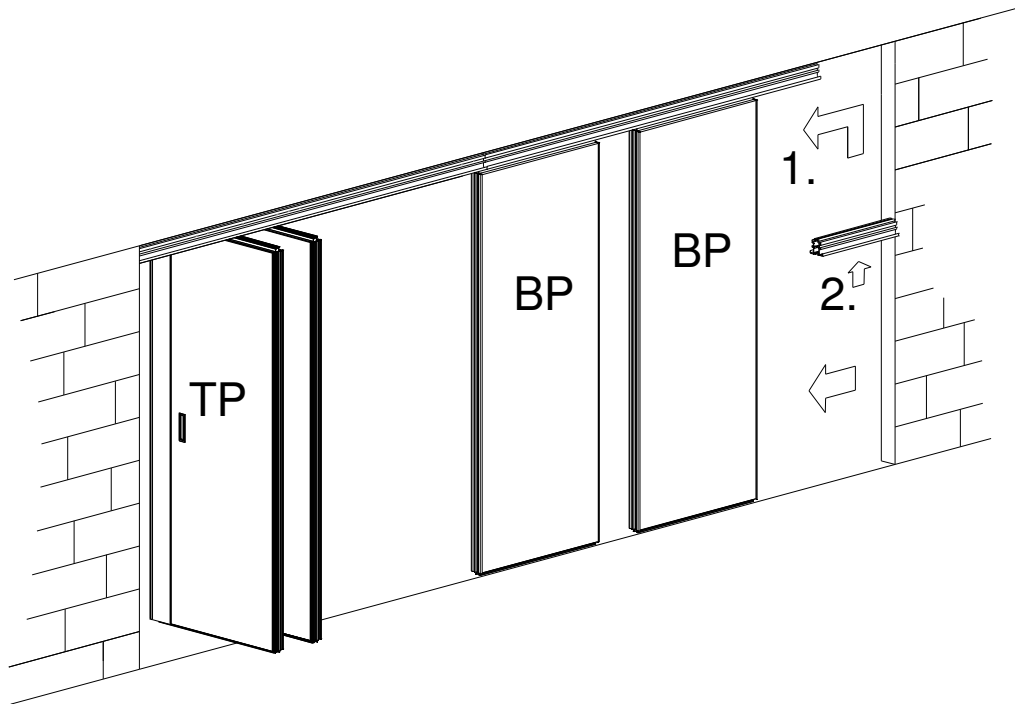
5.7 Track adjustment in direct track fitting



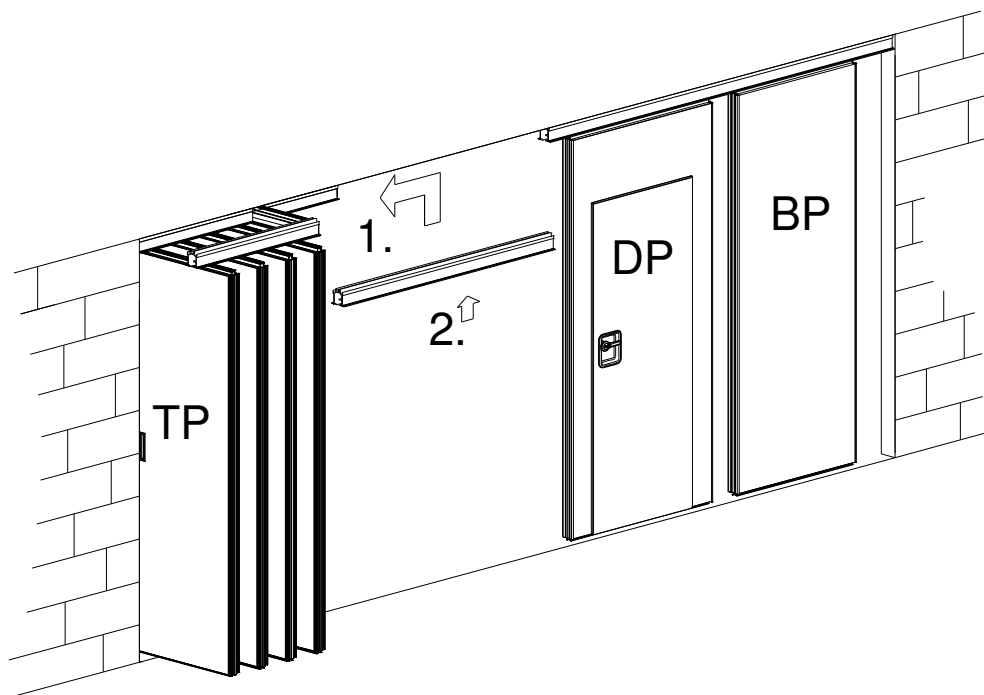
6. Hanging the panels

6.1 Hanging panels in 1-point track

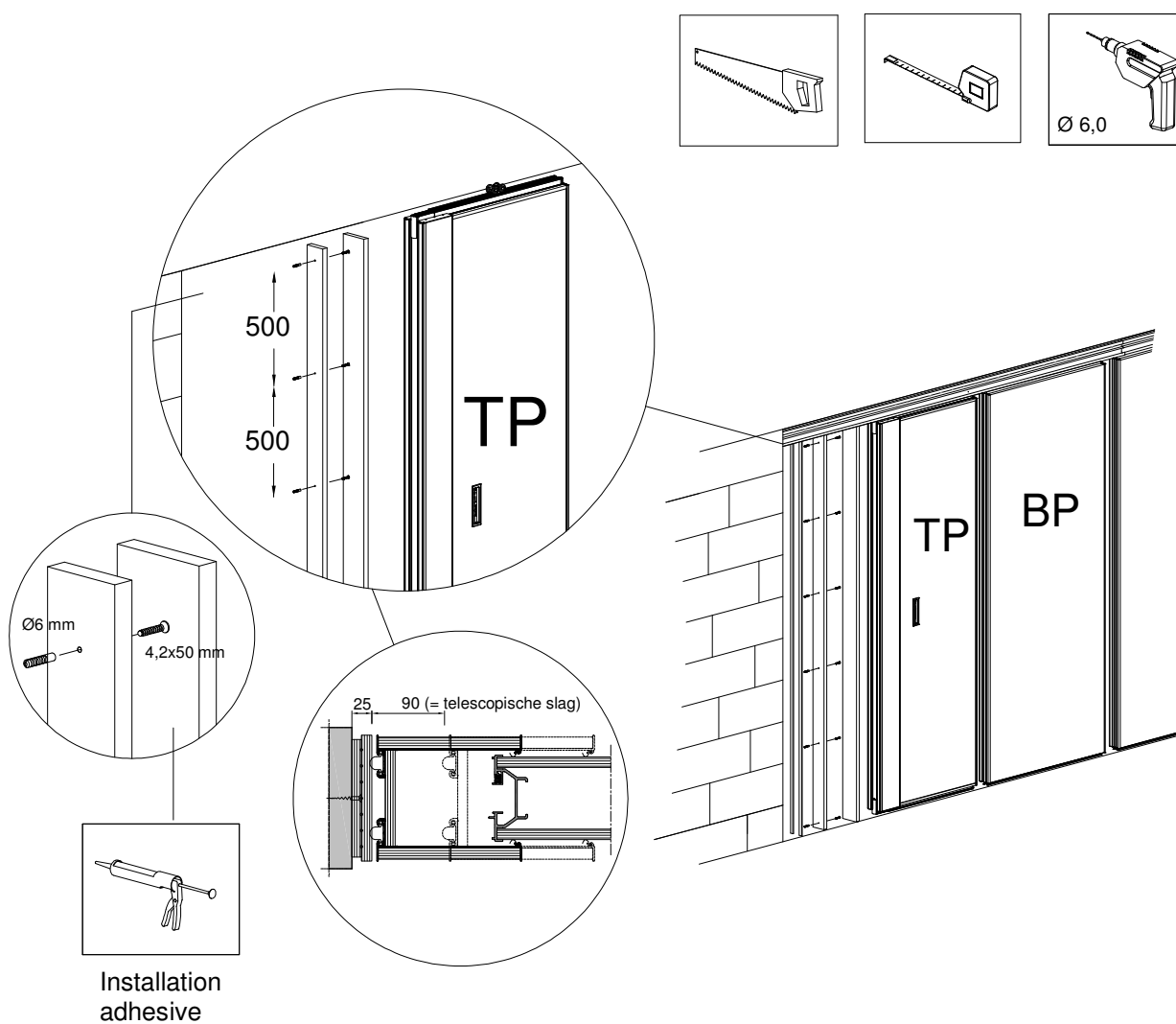
N.B.: Only remove packaging + bottom protective corners when the panels are being adjusted



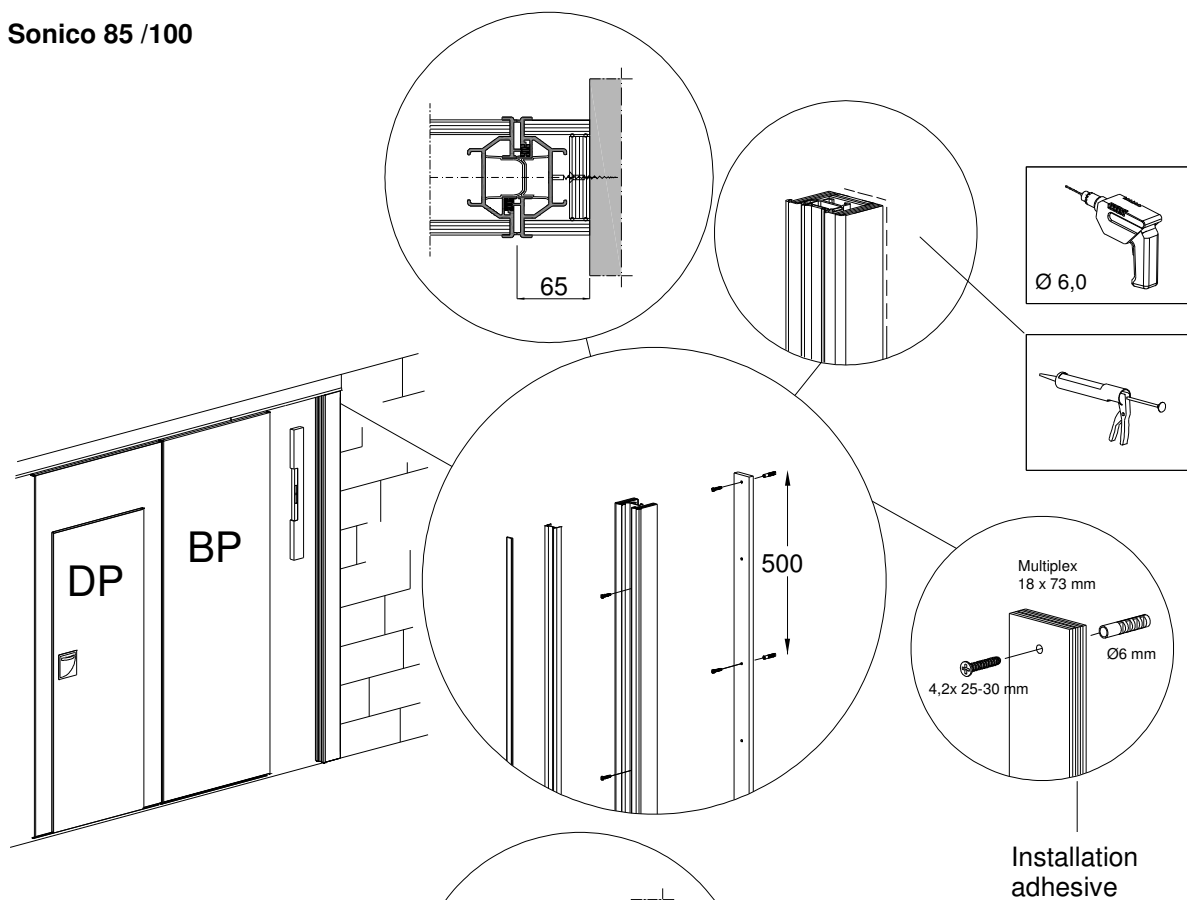
6.2 Hanging panels in 2-point track



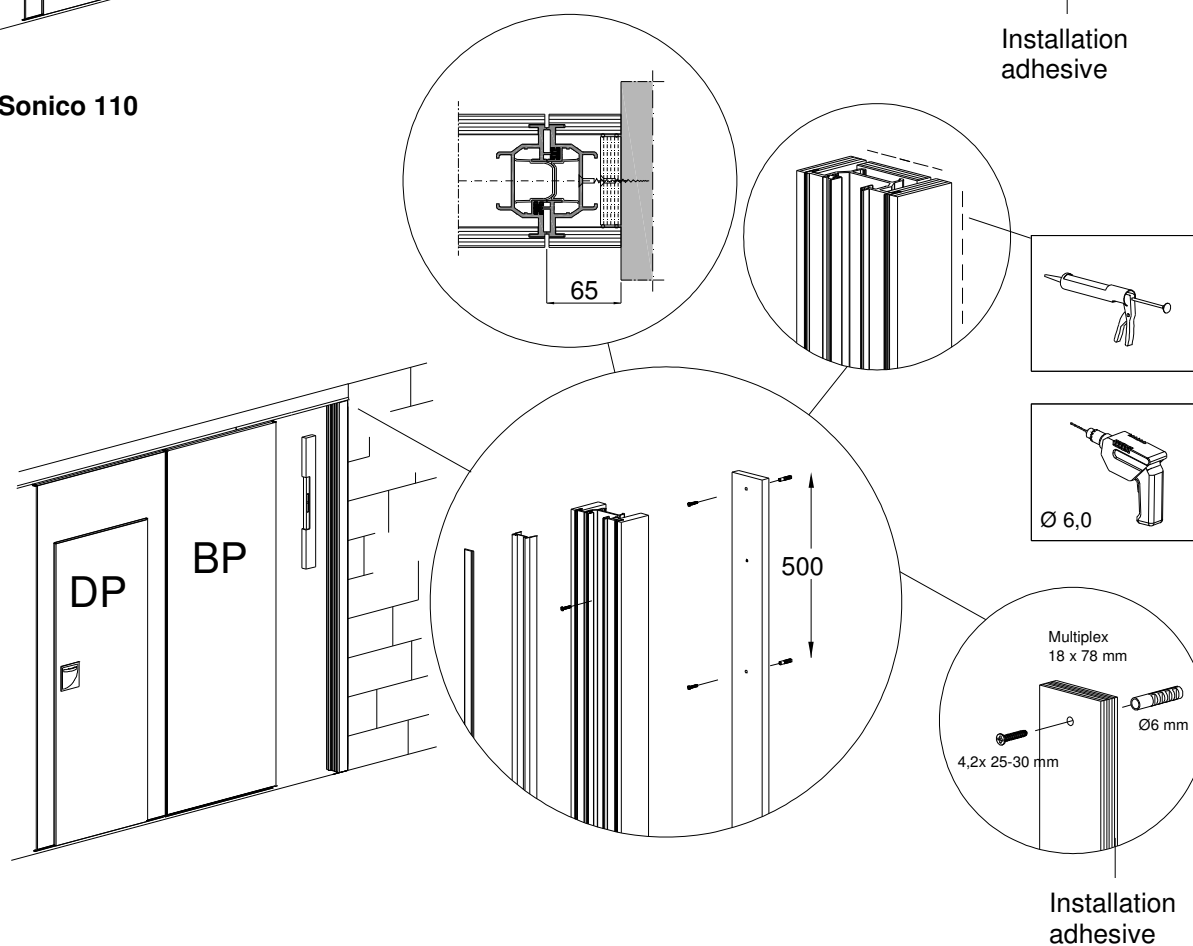
7. Installing telescopic wall connections



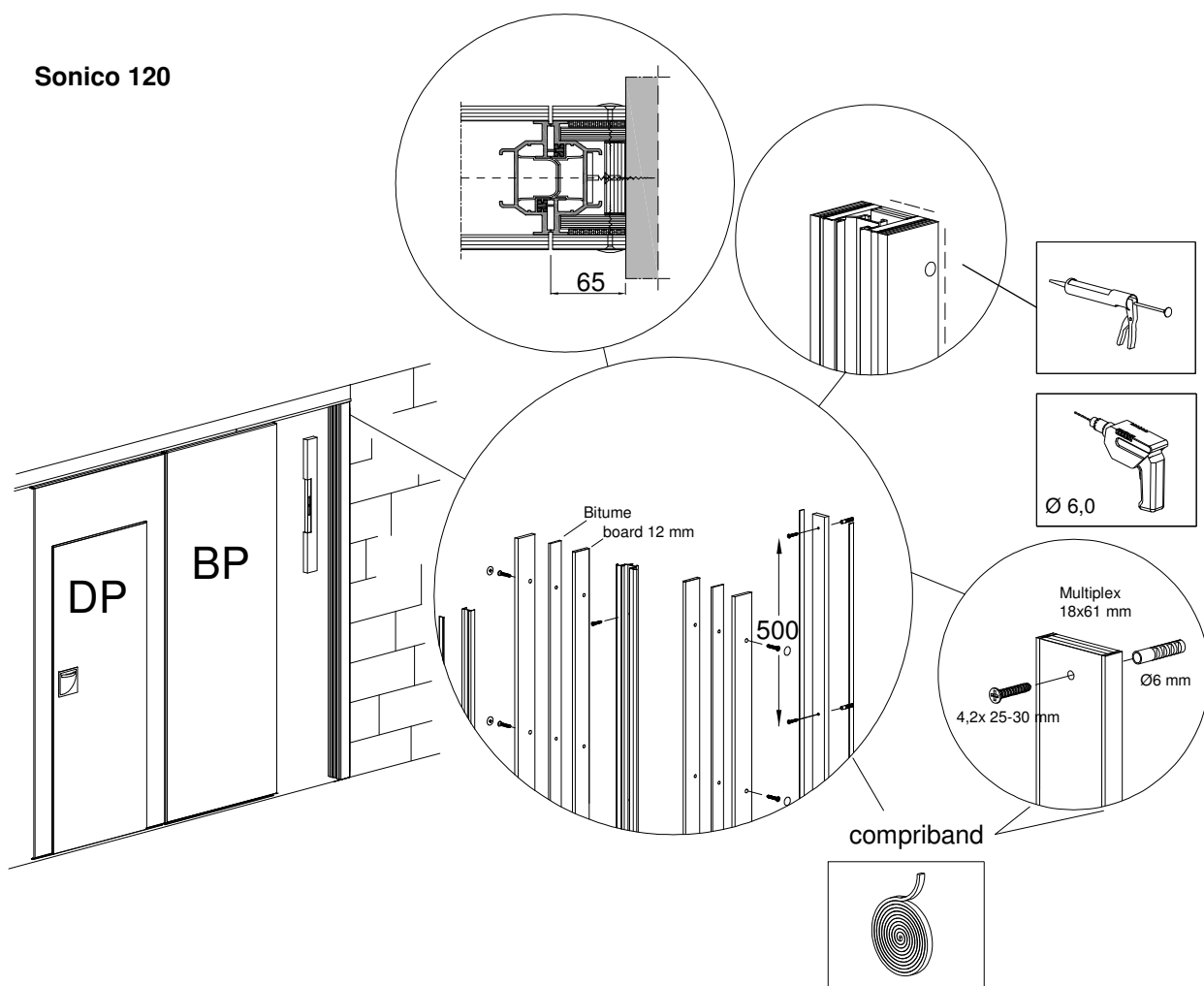
(for SA see appendix)

Sonico 85 /100

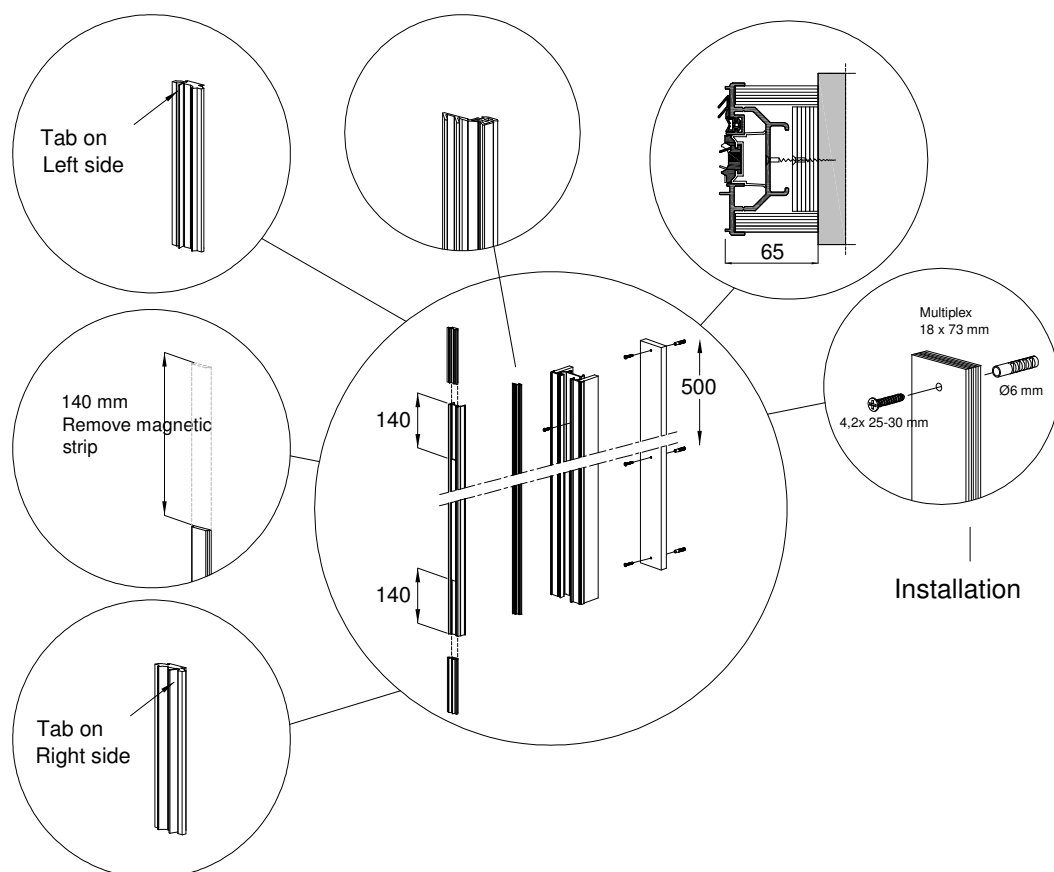
Sonico 110



Sonico 120

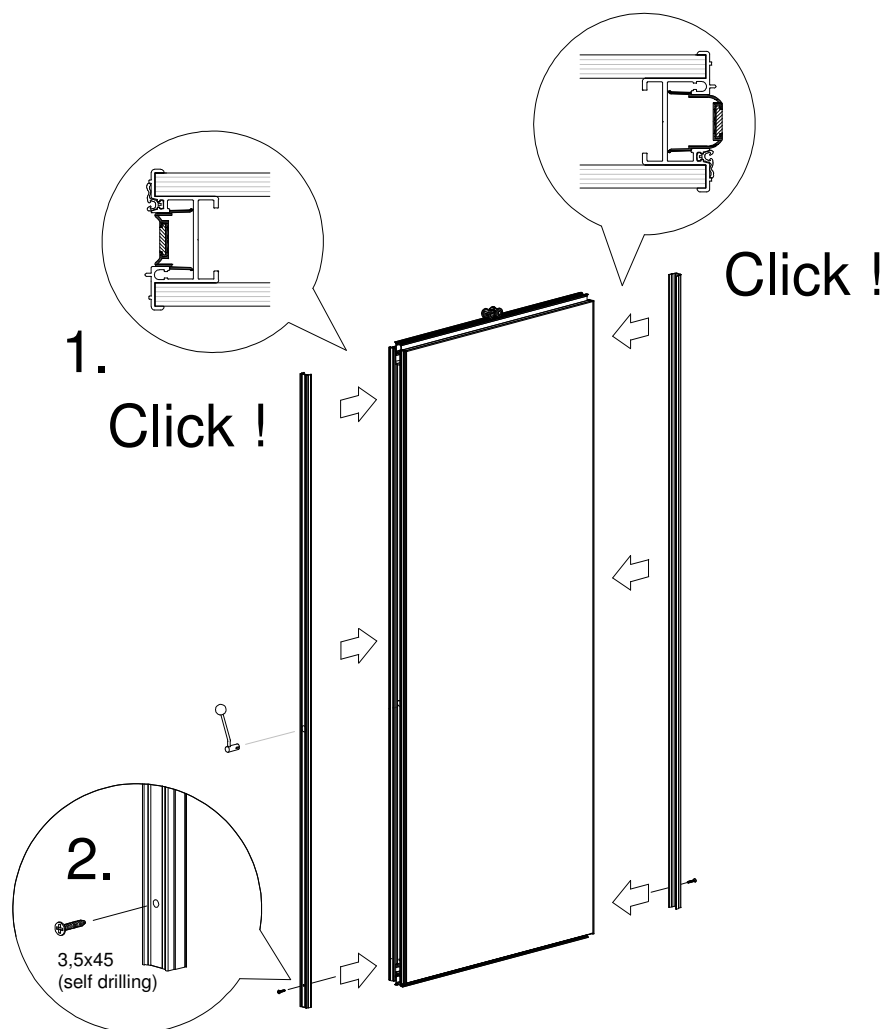


**dB ≥ 50
dB**



9. Installing magnetic profile

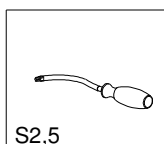
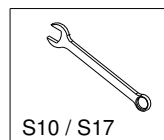
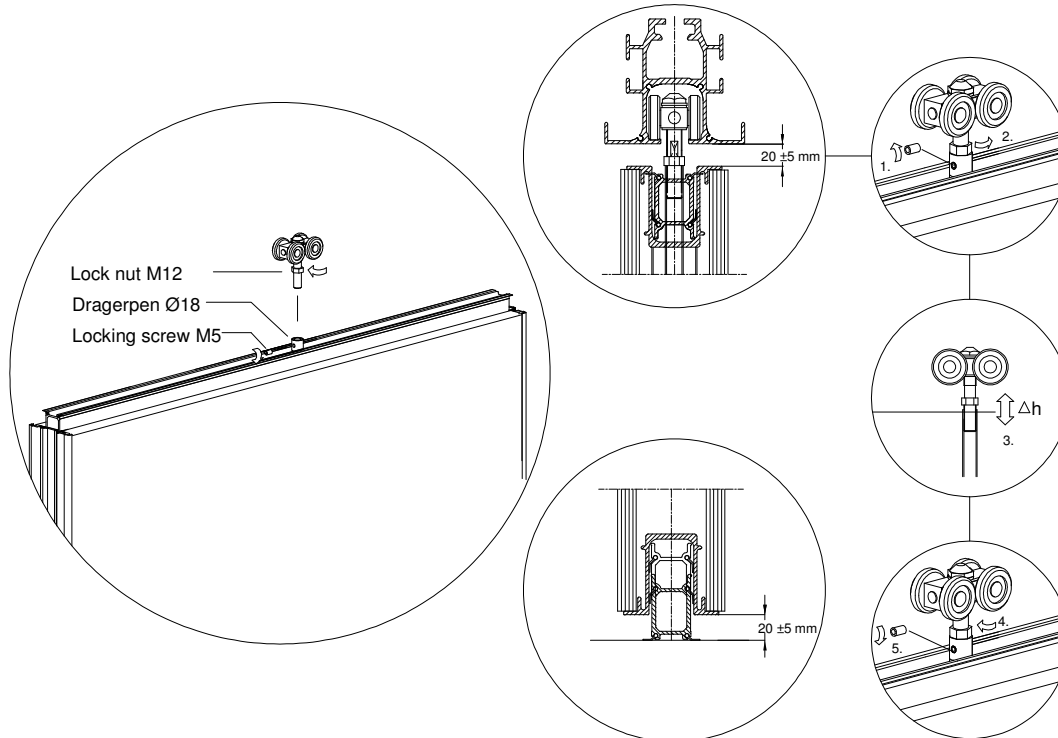
9.1 Installing magnetic profile



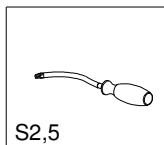
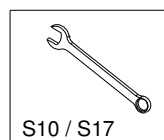
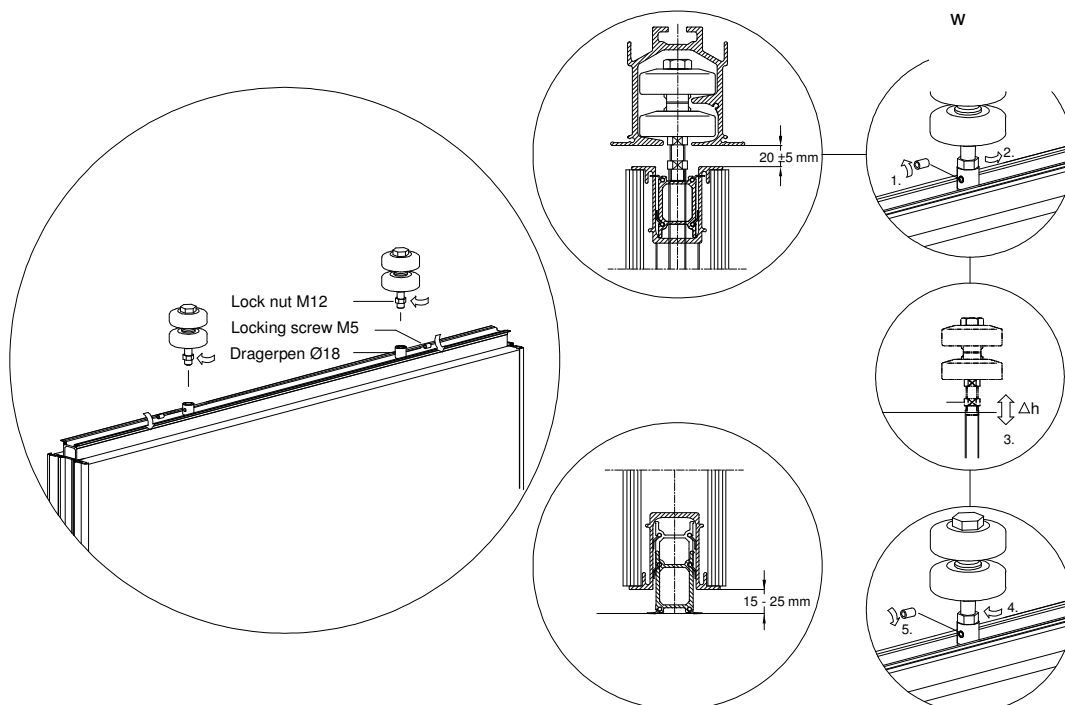
10. Adjusting panels

10.1 Adjusting the height

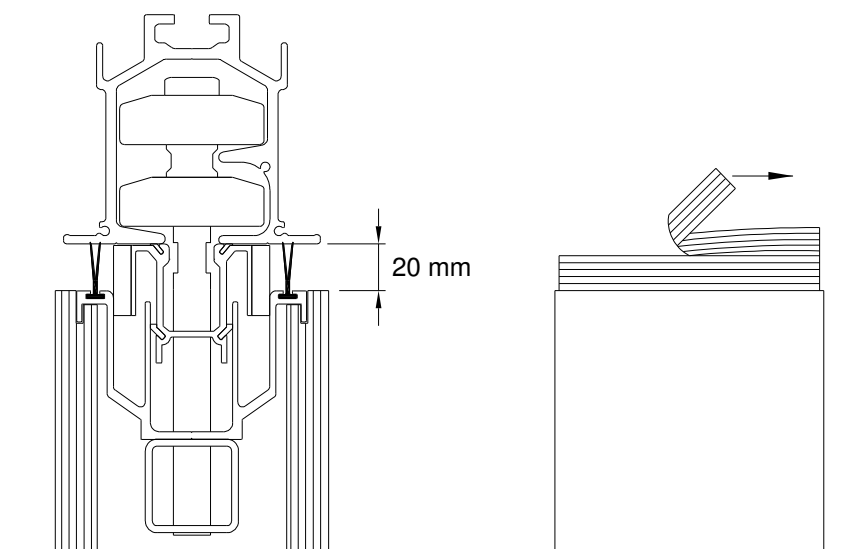
Adjust height of 1-point track



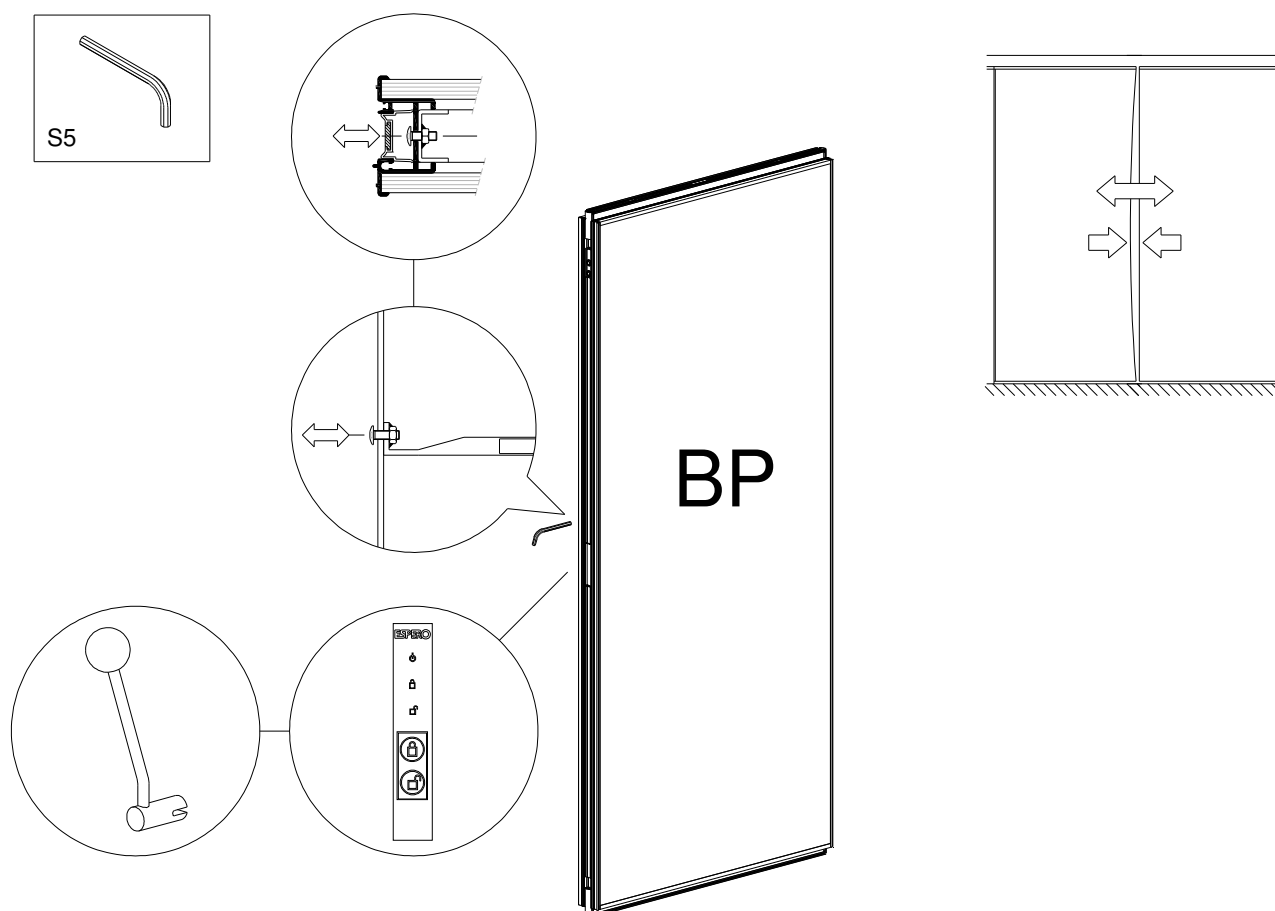
Adjust height of 2-point track



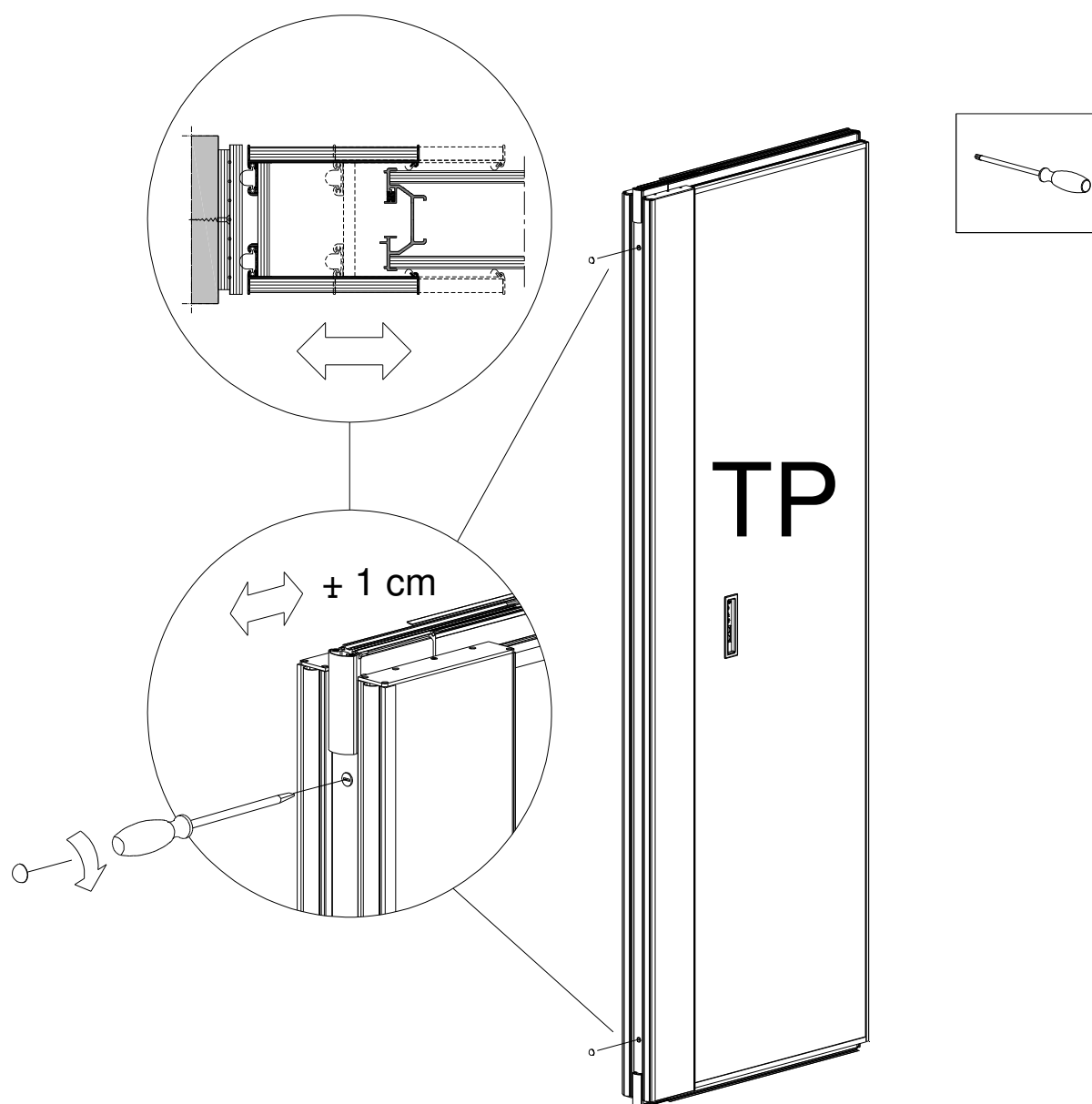
Strip off the flexible seals at the top and bottom in case dB > 54dB



10.2 Adjusting the width



10.3 Adjusting the telescopic sleeve



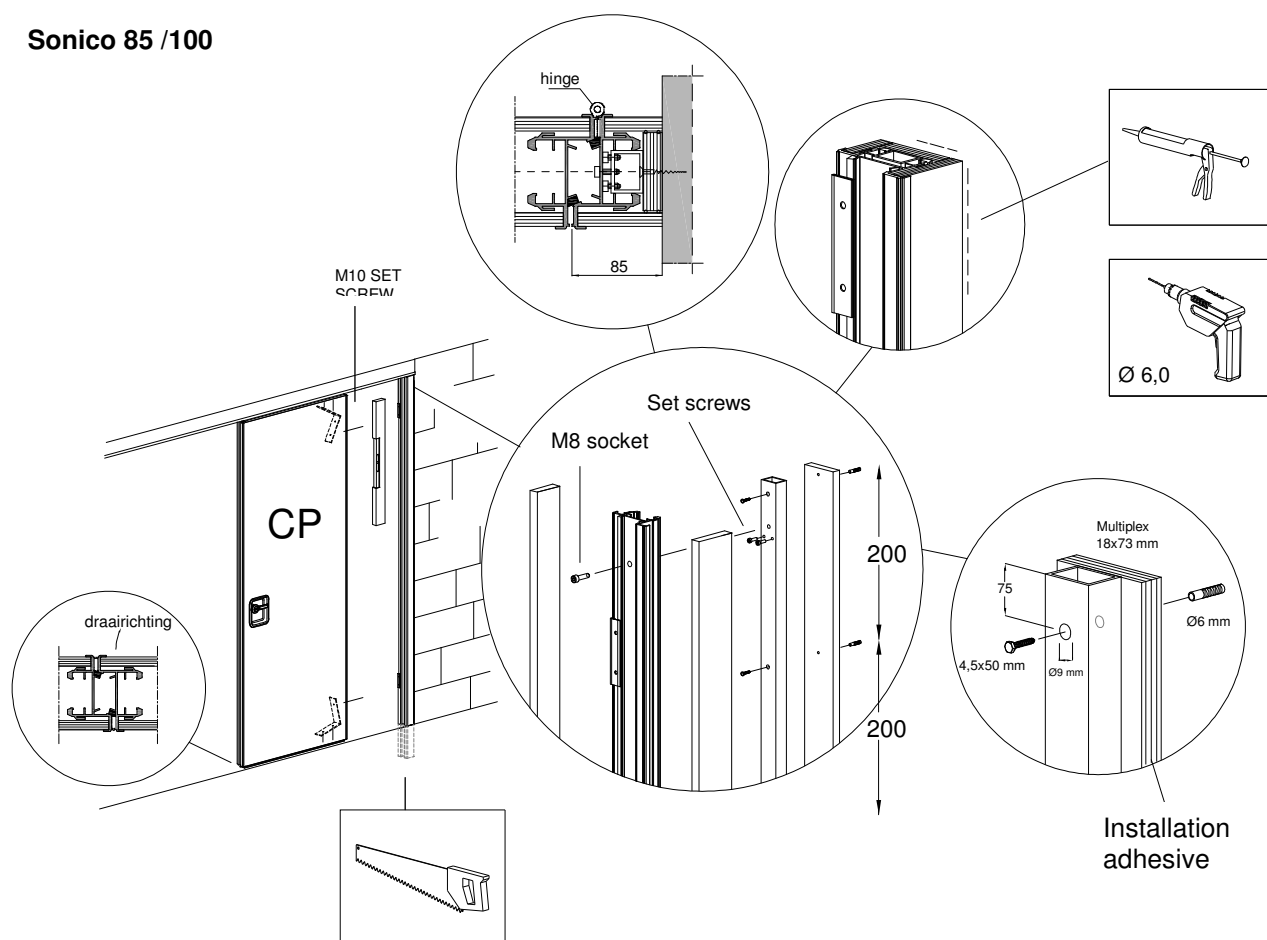
11.1 Built-in pass door



12. Communicating panels

12.1 Assembling the wall connection for communication panels

Sonico 85 /100



Sonico 110

Diagram illustrating the components and installation steps for the Sonico 110 door assembly:

- CP**: Main door panel.
- M10 SET SCREW**: Screws used for mounting the door to the wall.
- hinge**: Component for the door's movement.
- 85**: Dimension indicating the height of the hinge area.
- Set screw**: Screws used for the internal assembly.
- M8 socket**: Component used for the internal assembly.
- 200**: Dimension indicating the height of the internal assembly.
- Multiplex 18x78 mm**: Material used for the internal assembly.
- Ø6 mm**: Diameter of the hole in the multiplex.
- Ø9 mm**: Diameter of the hole in the multiplex.
- 4,5x50 mm**: Dimension of the hole in the multiplex.
- Installation adhesive**: Material used for securing the door.
- Ø 6,0**: Diameter of the hole in the door panel.

onico 120

M10 SET SCREW

hinge

85

Set screws

Bitumen
Spaanplaat 12 mm

200

200

M8 socket

Multiplex 18x61 mm

75

4,5x50 mm

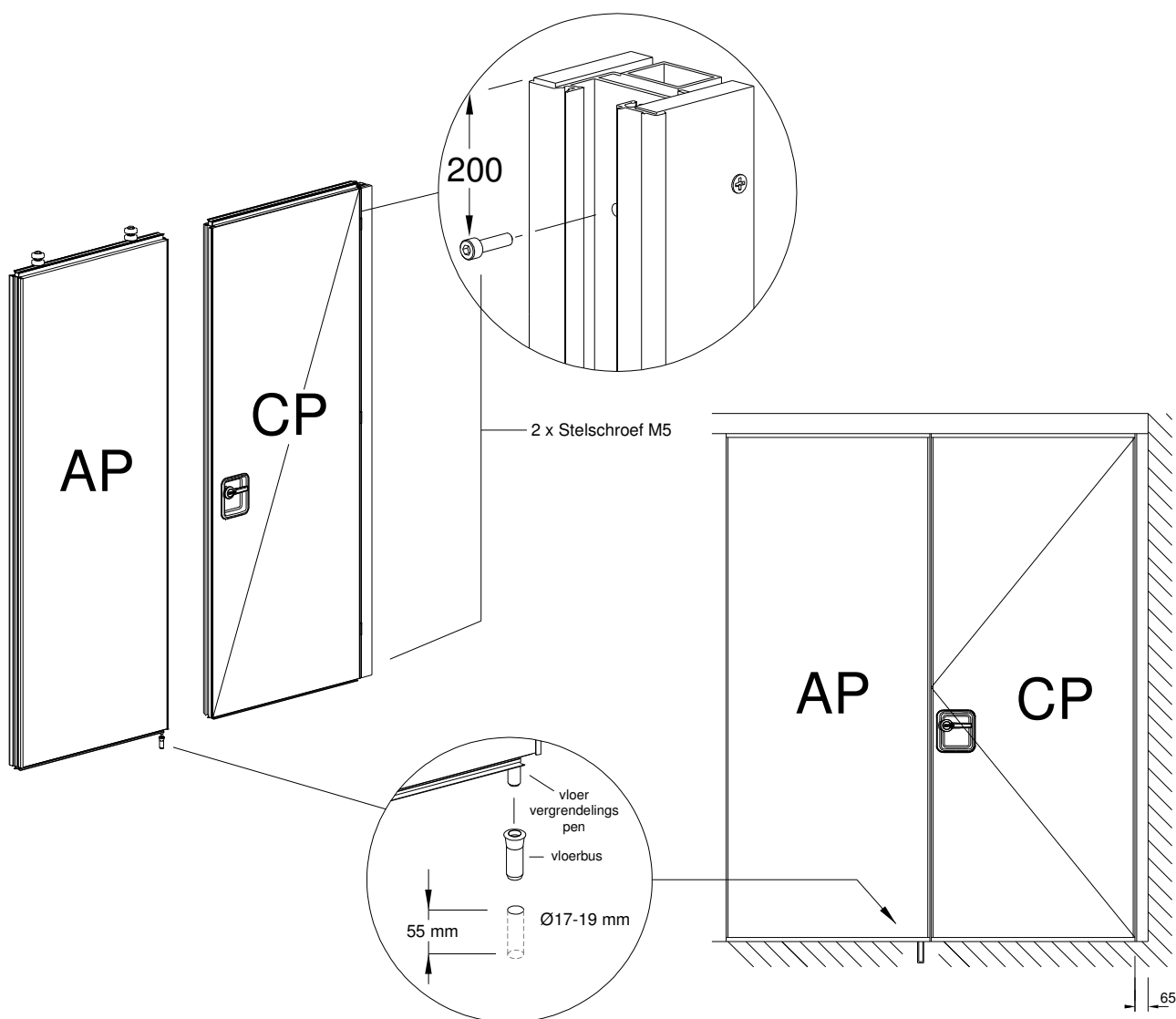
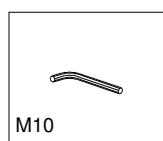
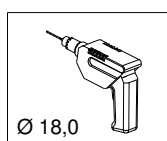
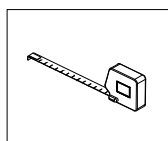
Ø9 mm

Ø6 mm

compriband

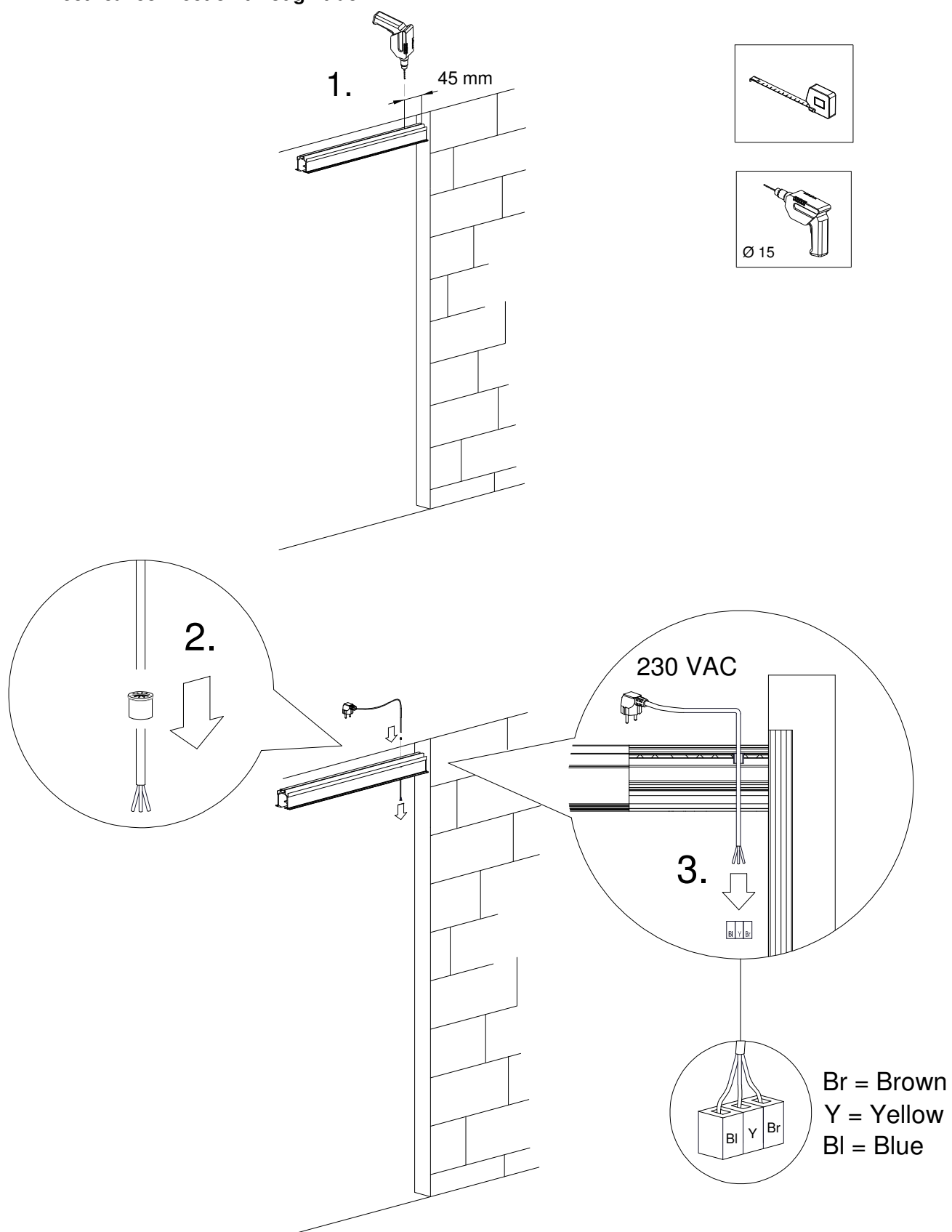
Ø 6,0

12.2 Final assembly of communication panels/striking plates

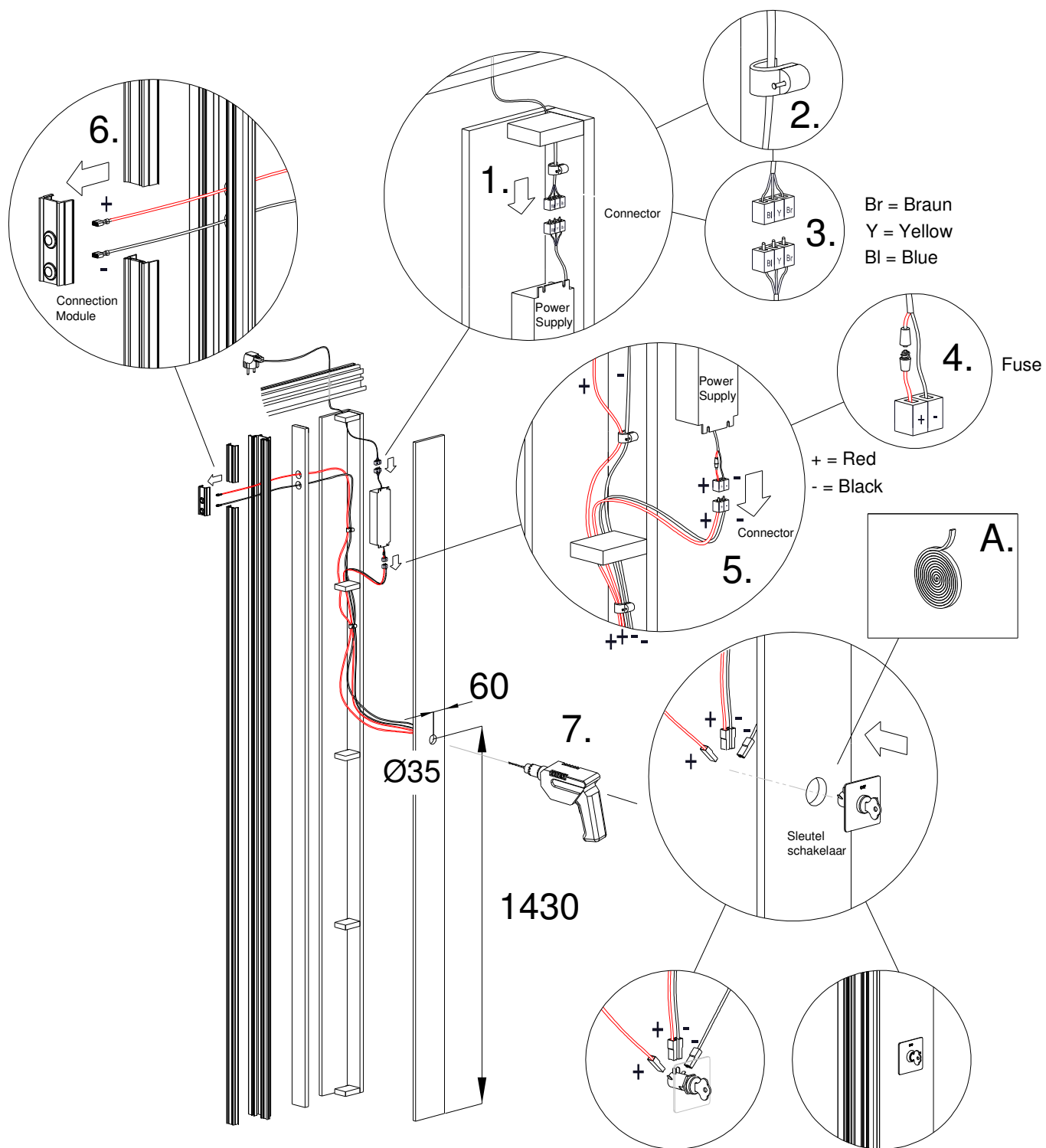


Appendices

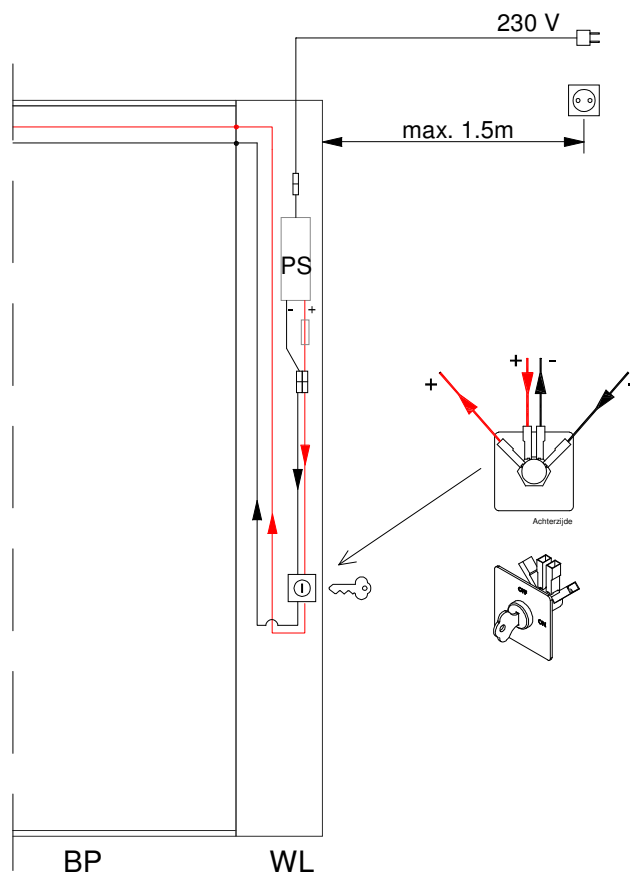
A. Electrical connection through track



B. Electrical connection in wall jamb



Sonico SA electrical diagram
PS in wall jamb



Sonico SA electrical diagram
PS outside wall jamb

